

# **WORKPLACE LEARNING IN THAILAND: MOTIVATION AND BENEFITS IN AUTOMOTIVE PARTS AND HOTEL INDUSTRIES**

Patcharawalai Wongboonsin

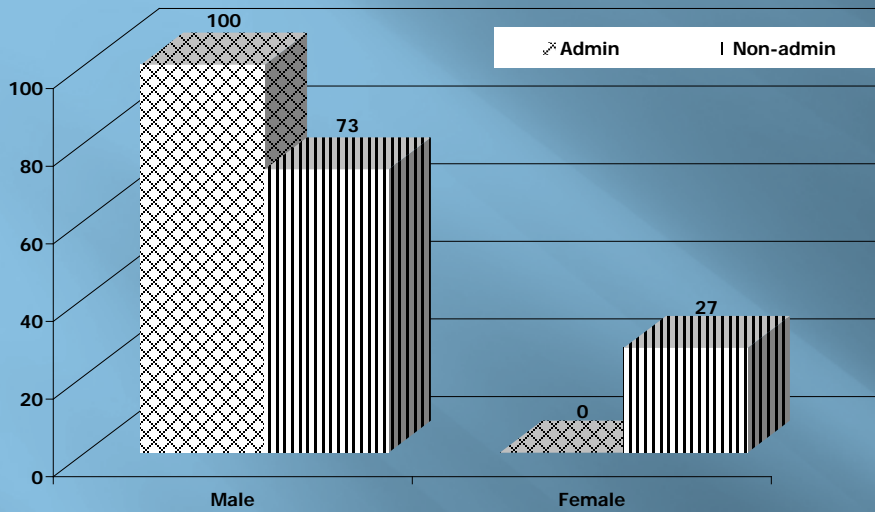
Director

Human Development & Migration Studies Center

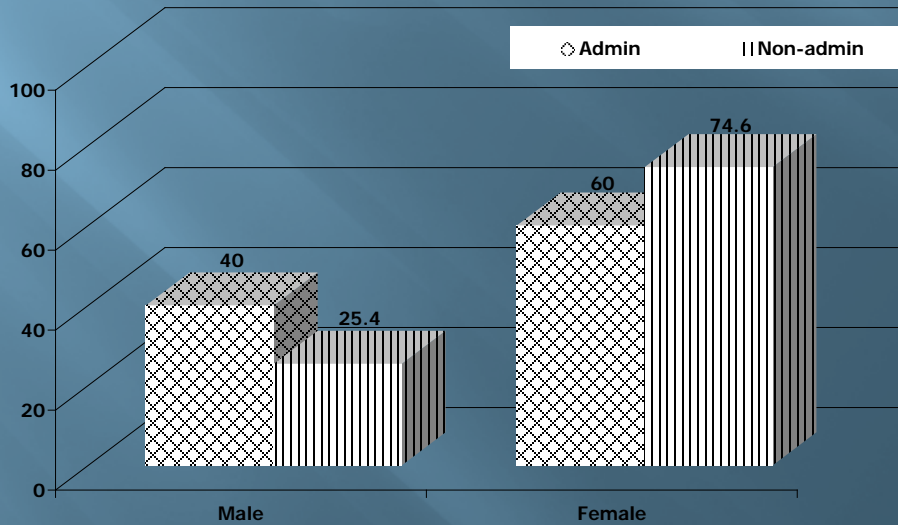
Chulalongkorn University

Thailand

# Respondents by Gender and Job Category

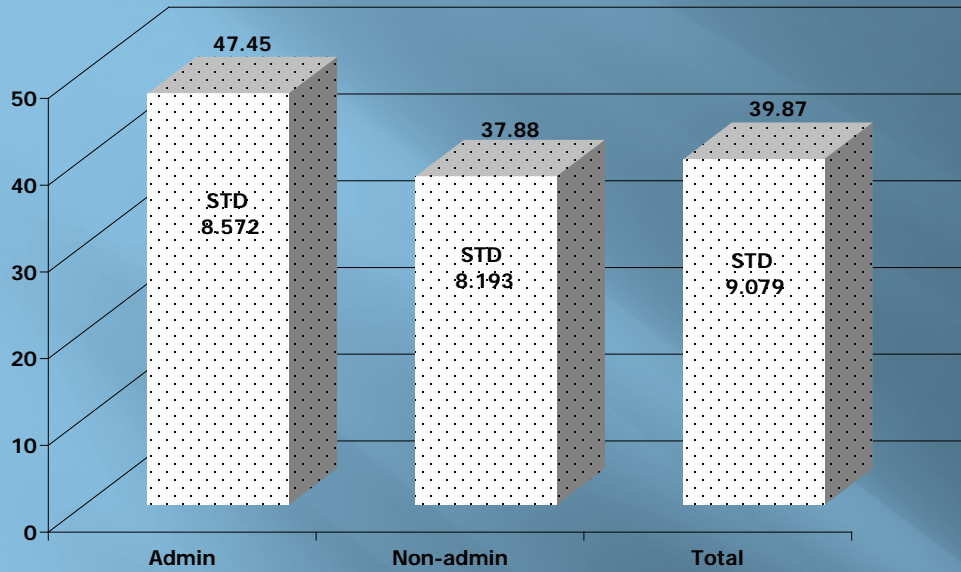


Automotive Parts



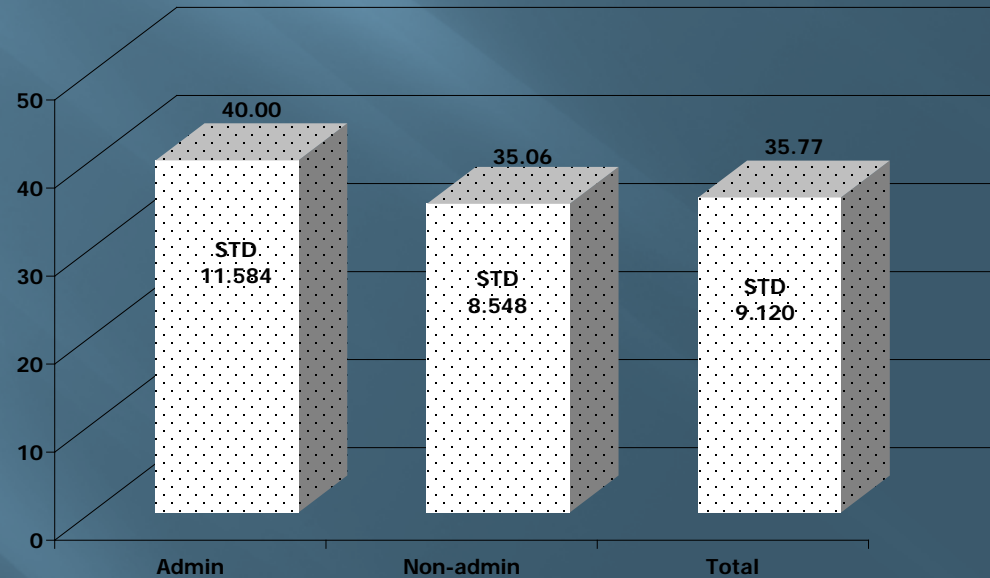
Hotel

# Mean Age of Respondents

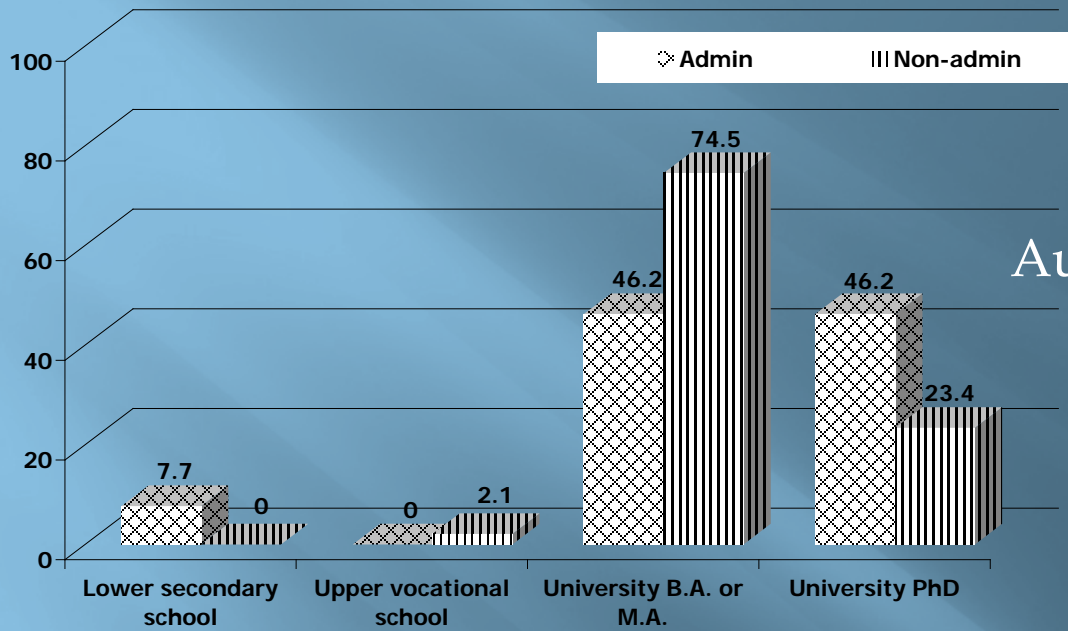


Automotive Parts

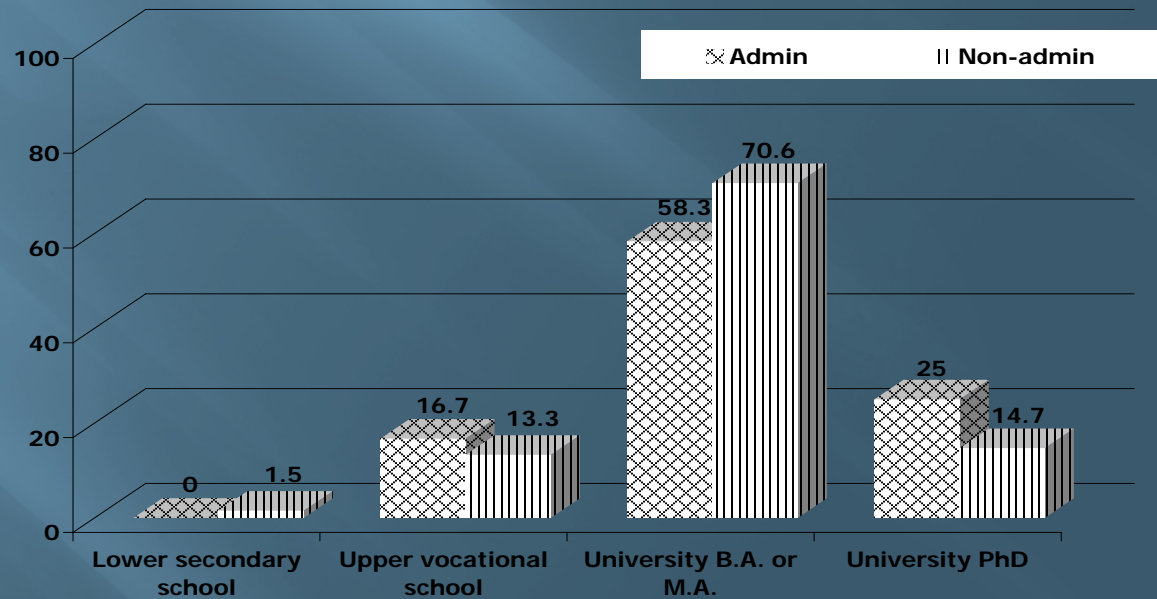
Hotel

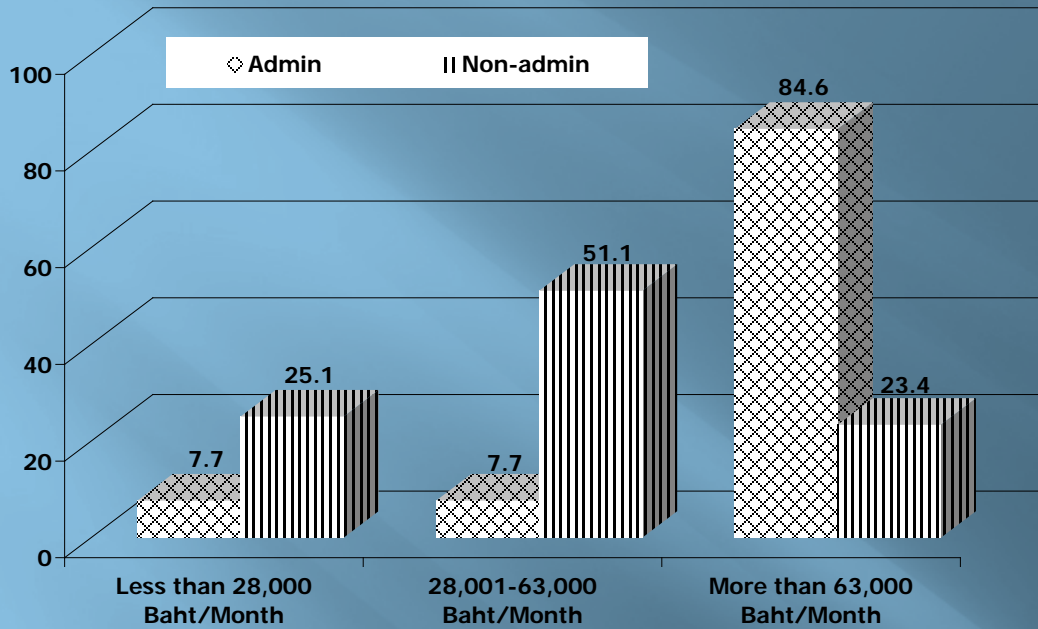


# Educational Background

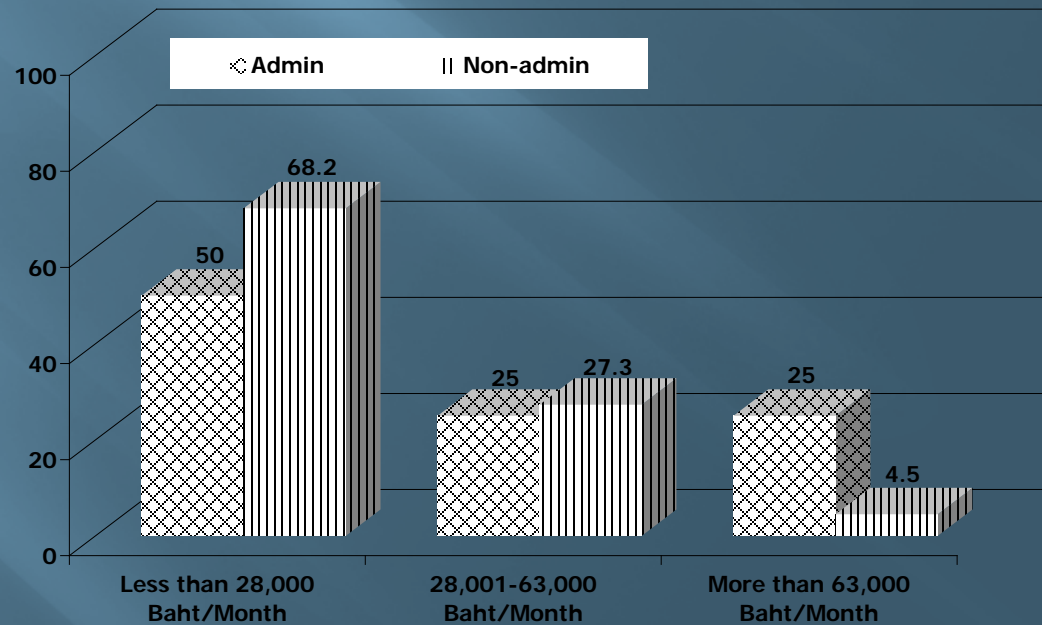


Hotel



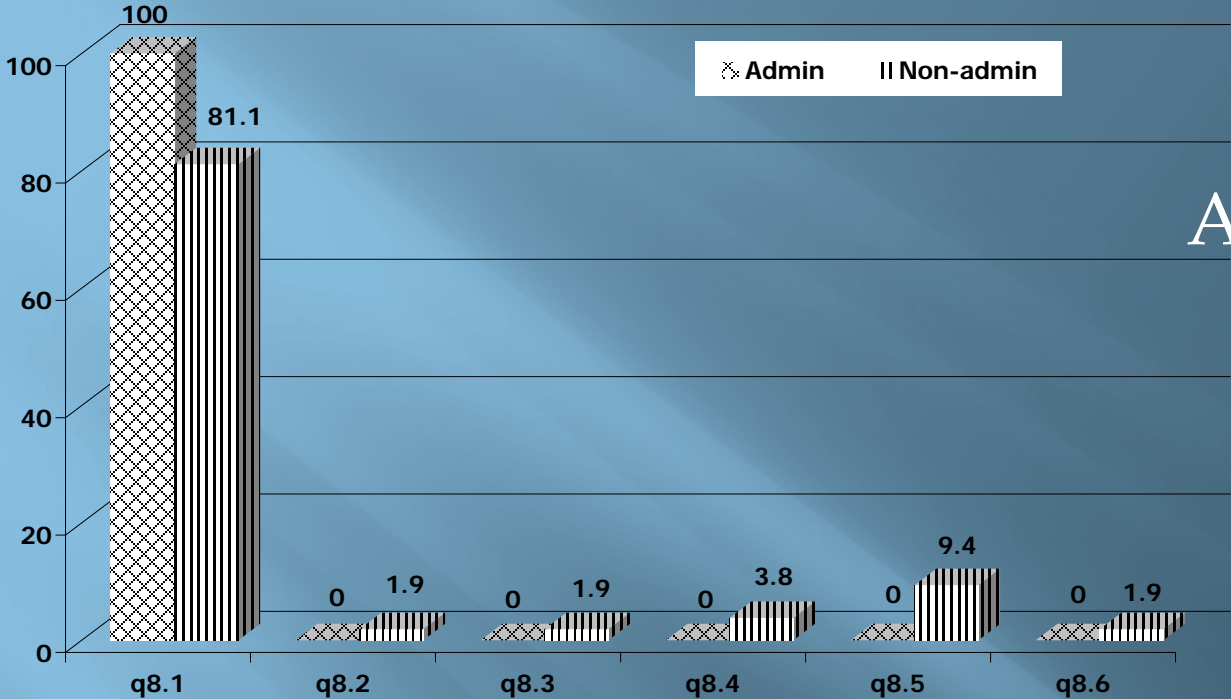


## Automotive Part

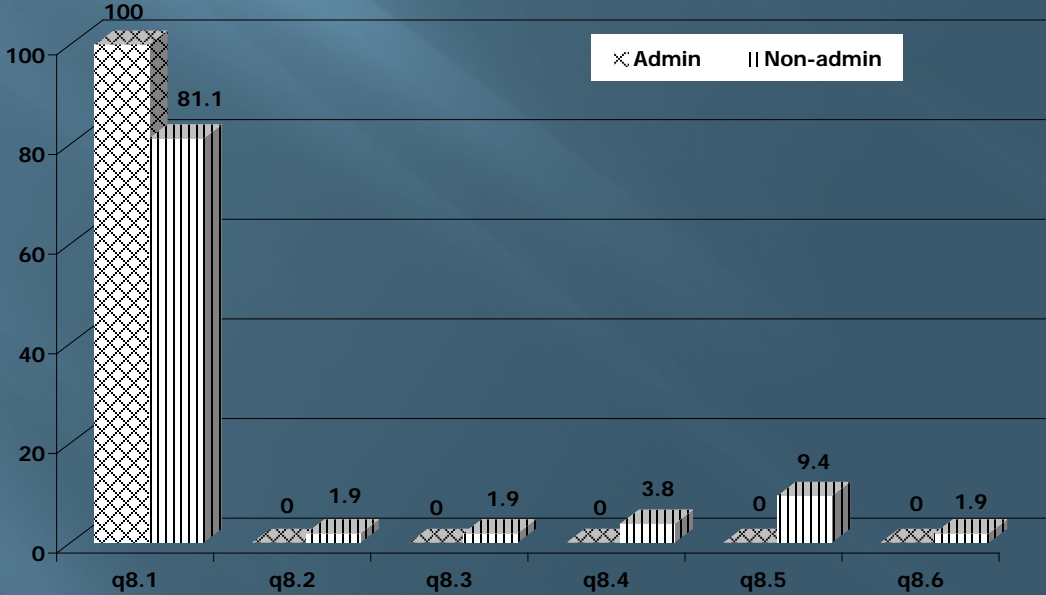


## Hotel

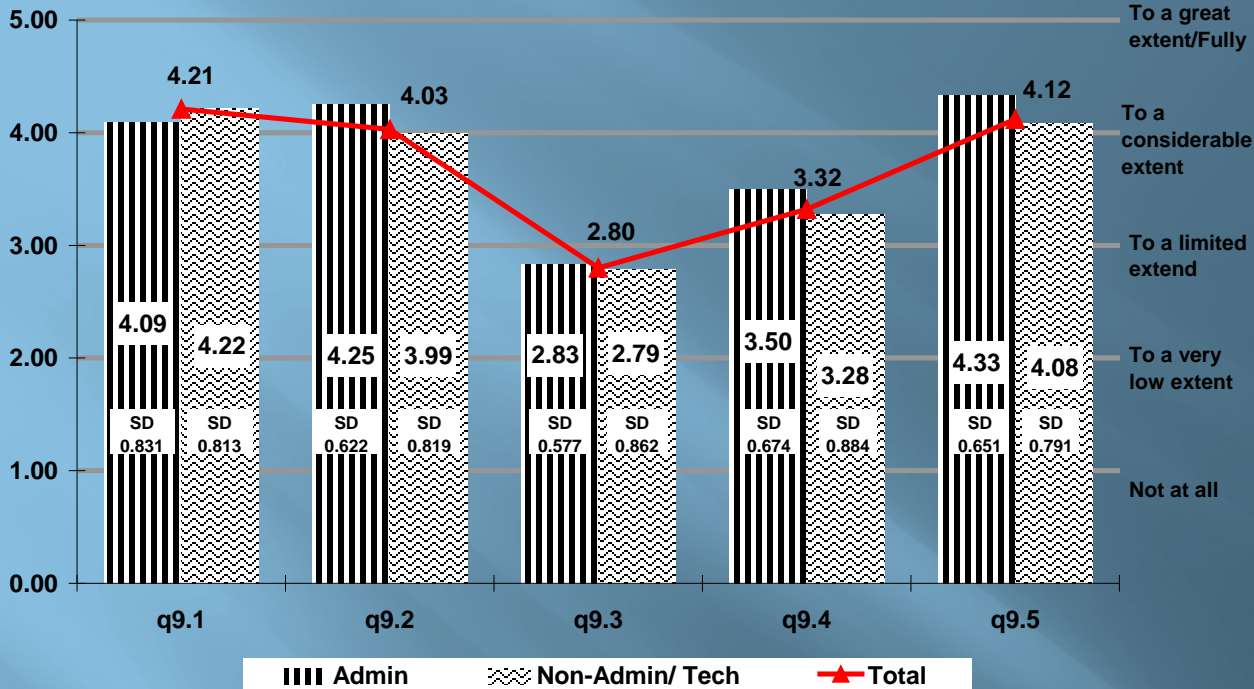
# Automotive Part



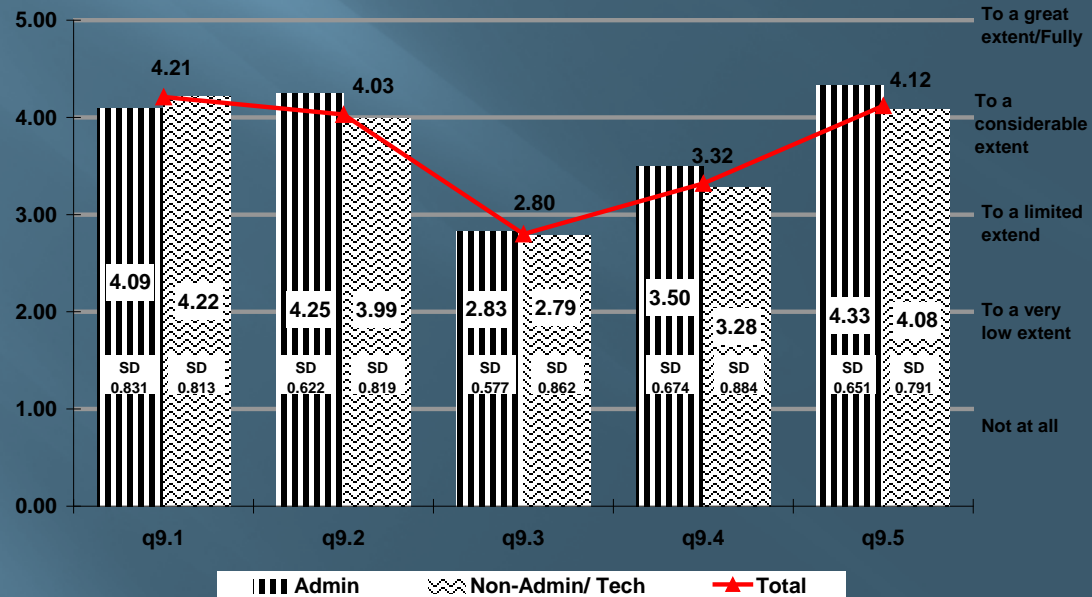
# Hotel



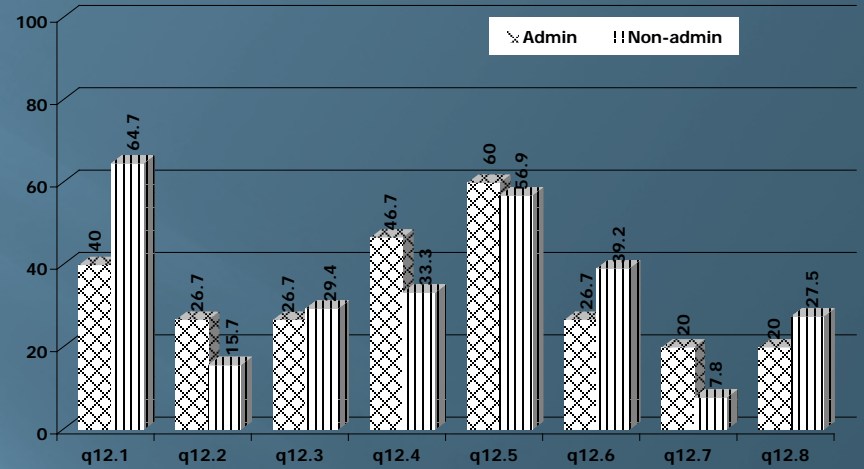
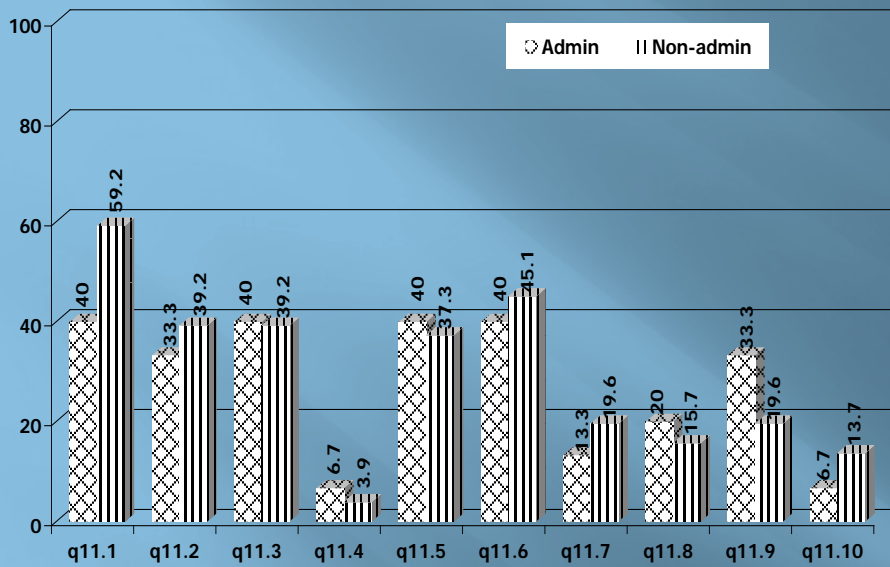
# Automotive Part



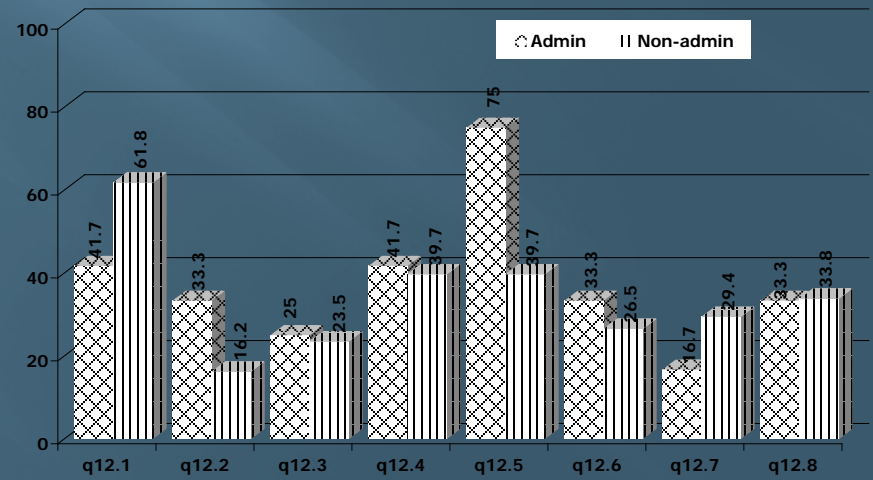
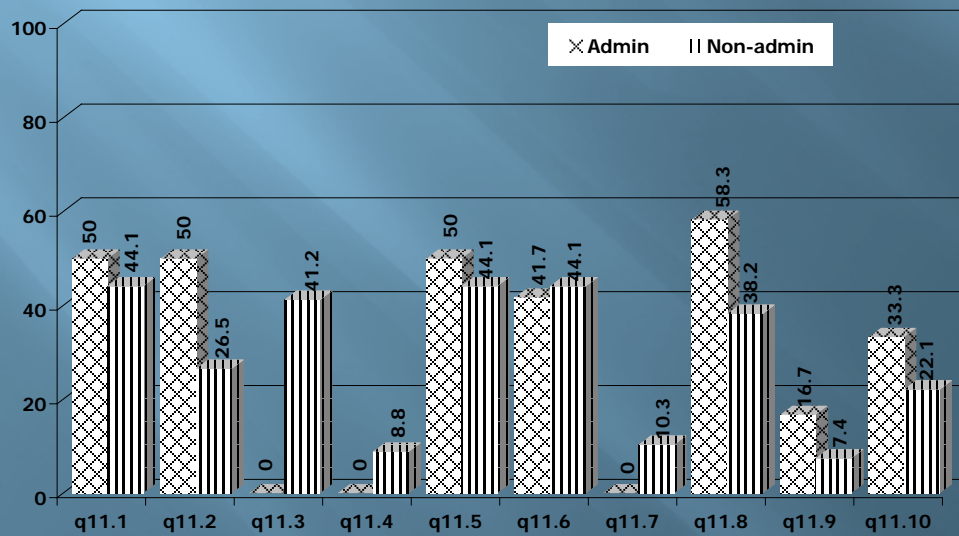
# Hotel



# Automotive Part

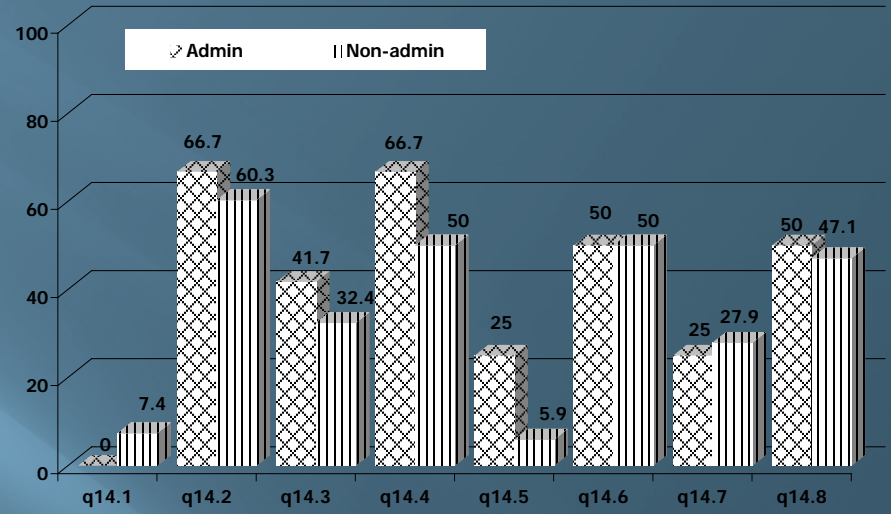
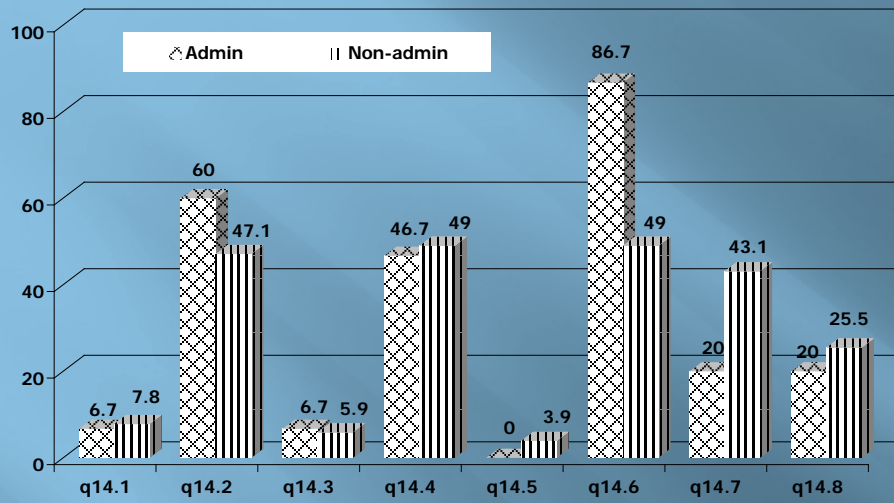


# Hotel

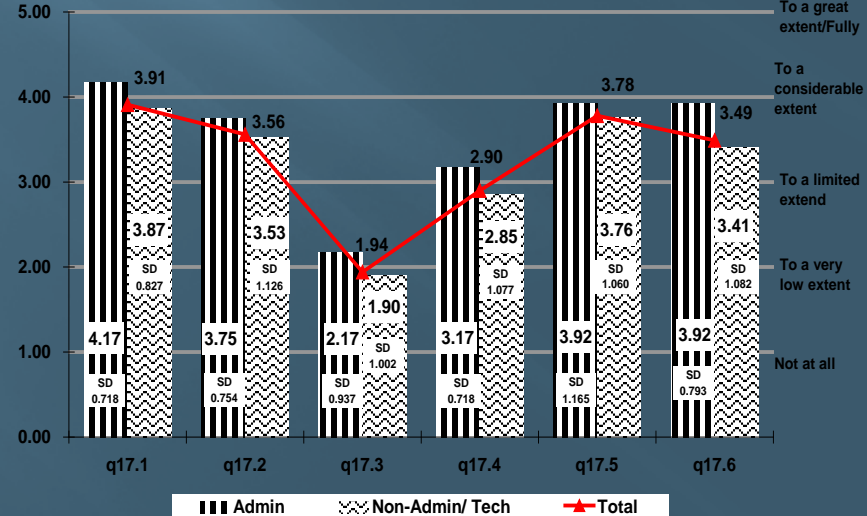
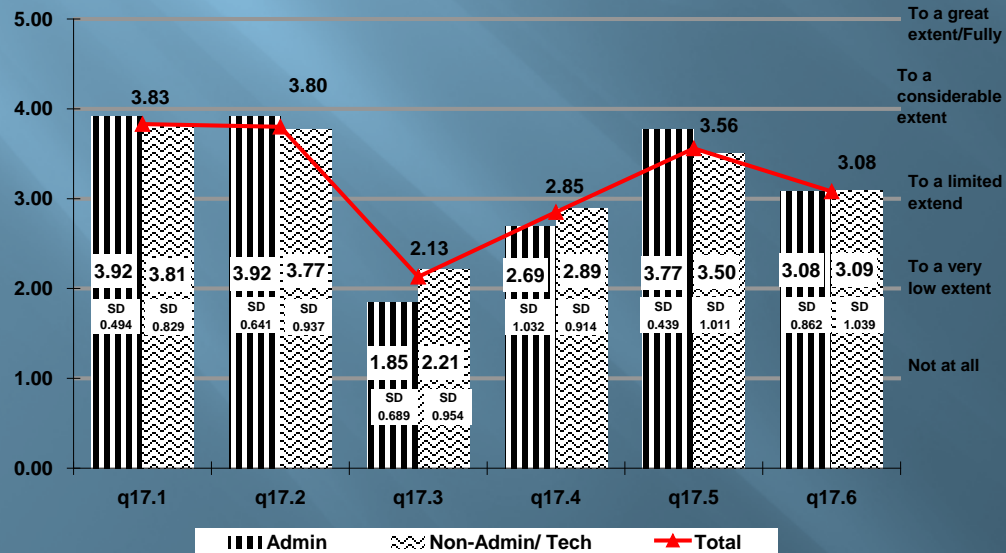




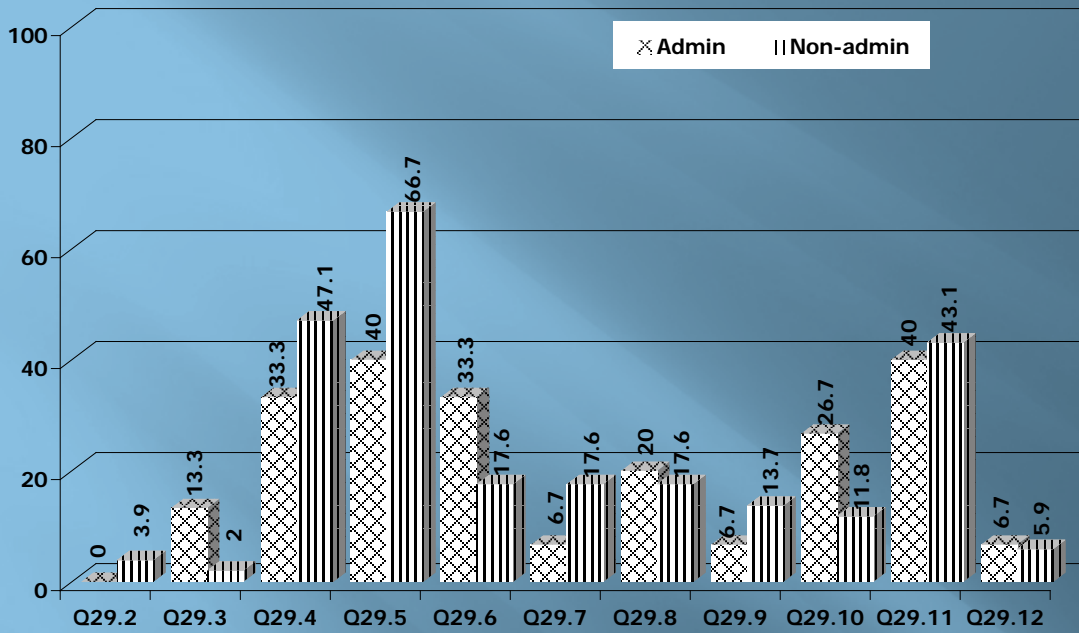
# Automotive Part



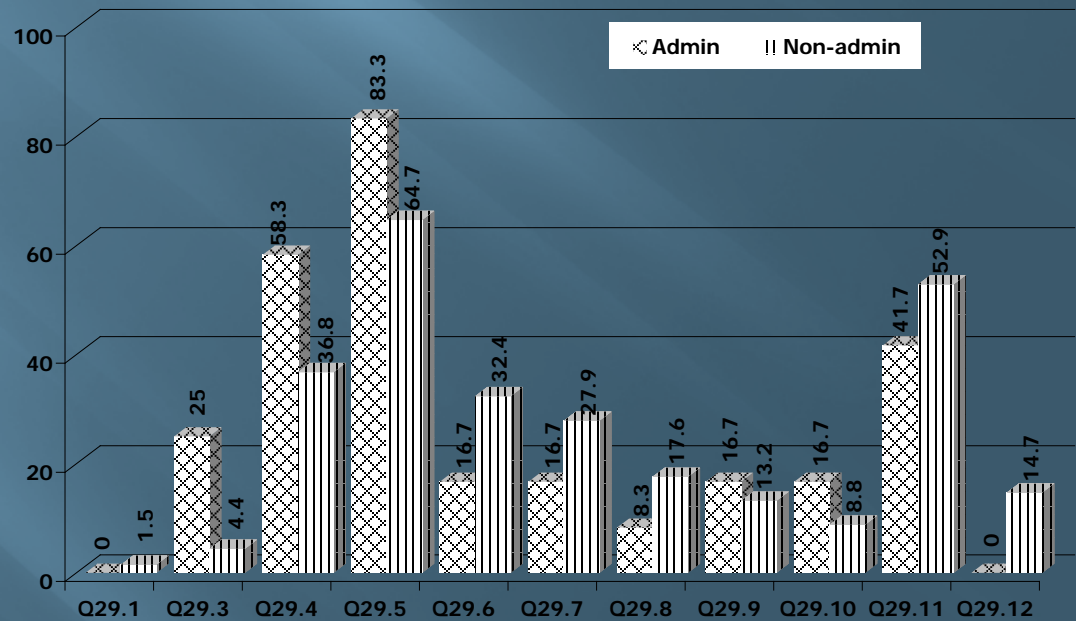
# Hotel

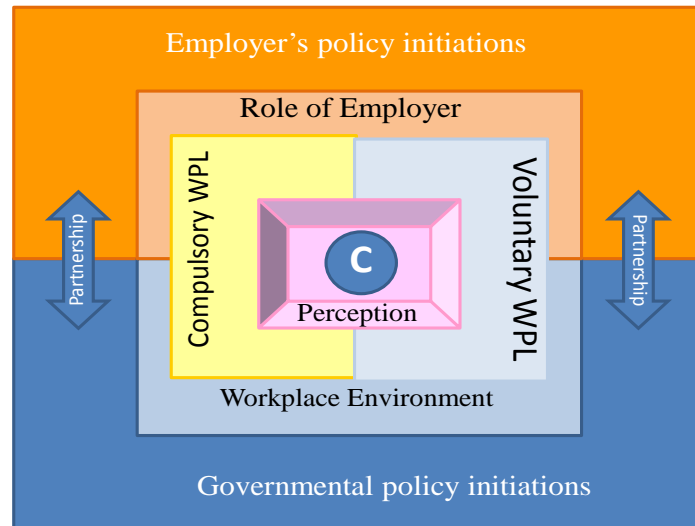


# Automotive Part



# Hotel





**C** = Competency

THANK YOU